



**NM** CONSTRUCTION  
SERVICES



# OBJECTIVES



## Mission

NM Construction Services have and will always direct our efforts towards our customers by adhering to timely delivery and maintaining high-quality standards under any circumstances. We at NM Construction Services believe in creating long-term relationships with our clients, associates, partners, and employees.



## Vision

- NM Construction Services is a professionally managed Indian multinational, committed to total customer satisfaction and enhancing values.
- We shall be an innovative, entrepreneurial and an empowered team constantly creating value and attaining national and international benchmarks.
- We foster a culture of caring, trust and continuous learning while meeting expectations of our clients, employees and society.

# Our Values



## People First (Make People Happy)

We prioritise our people in everything we do: employees and customers.

## Quality (Set Higher Standards)

We achieve our desired results and strive for continual improvement.



## Integrity (Do Whats Right)

We are consistently honest, transparent, and accountable.

## Innovation (Transform Tomorrow, Today)

We transform imagination into reality.



## Teamwork (Teamwork Makes the Dreamwork)

We are united by a shared dream, connected in respect and support.

OBJECTIVES

# OWNER DESK



**WHEN YOU  
CARE ENOUGH  
TO GIVE THE  
VERY BEST.**

**NIRAV M MINAWAALA**

# ABOUT US

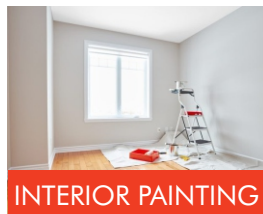
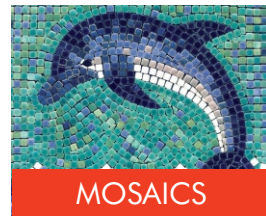


NM Construction Services is an Indian multinational engaged in Products and Services. It operates from Mumbai and services needs to the entire country. A strong, customer focused approach and the constant quest for top class quality along with timely delivery has enabled us to attain and sustain leadership in major fields of businesses for years.

We are engaged in all the major products and services required for construction. Every aspect of our business is characterised by professionalism and high standards of corporate governance. Sustainability is embedded into our long-term strategy for growth.

The Company's footprint shall extend all across the country.

# PRODUCTS & SERVICES





**EVERY BUILDING  
SPEAKS ABOUT  
A QUALITY WE  
PROVIDE.**

# CEMENT



**BUILT ON  
TRUST, FOCUSED  
ON QUALITY.**

## CEMENT

**CEMENT** : Cement is a binding material, primarily used in construction, that hardens after mixing with water, binding other materials like sand and aggregates together to create concrete and mortar.

It's a fine powder made from materials like limestone and clay that are heated and then ground. Cement is essential for creating durable structures and is a key component in both concrete and mortar.

# RMC



**ENJOY THE BEST  
PRODUCTS FROM  
OUR COMPANY.**

## RMC

RMC : Ready-mix concrete refers to concrete that is specifically manufactured for customers' construction projects, and supplied to the customer on site as a single product. It is a mixture of Portland or other cements, water and aggregates: sand, gravel, or crushed stone.

Ready mix concrete comes in three types, where each type is determined by the specific mixture of ingredients. The three types are Shrink Mixed Concrete, Transit Mixed Concrete and Central Mixed Concrete.

# CEMENT

## Brands We Sell



# RMC

## Brands We Sell



# CLIENTS

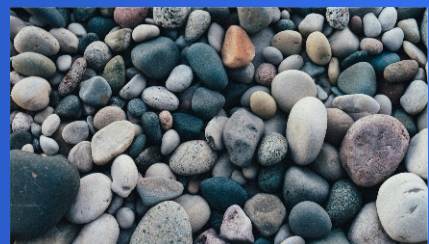
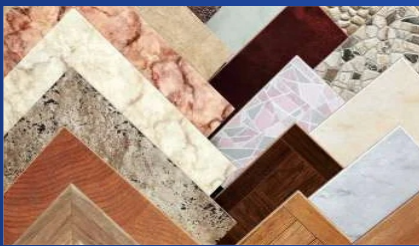


# TILES



**ARTISTRY IN  
EVERY TILE,  
BEAUTY IN  
EVERY SPACE.**

TILES, MARBLES, MOSAICS, SLABS, QUARTZ & STONES



[www.nmconstructionsrevices.com](http://www.nmconstructionsrevices.com)

# TILES

## TILES, MARBLES, MOSAICS, SLABS, QUARTZ & STONES

Our business associates for Tiles, Marbles, Mosaics, Slabs, Quartz & Stones is directly from the manufacturers who are in the business since decades and have manufactured and supplied to several major brands and clients.

### Brands We Sell



### CLIENTS





**FLY HIGH  
AND REFLECT  
WITH  
ALUMINIUM.**

## ALUMINIUM WINDOWS

Aluminium windows are windows that have frames made from aluminium, a lightweight, strong, and corrosion-resistant metal. They are known for their durability, low maintenance, and modern aesthetic. These windows are popular for both residential and commercial buildings due to their strength, slim frames, and resistance to rust and weathering.

### Key Characteristics :

#### Strength and Durability :

Aluminium is a strong and lightweight material, making it ideal for window frames that can withstand the elements without rusting or corroding.

#### Slim Frames :

The strength of aluminium allows for the creation of slimmer frames, maximizing the glass area and allowing for more natural light to enter.

#### Low Maintenance :

Aluminium windows are relatively low-maintenance, requiring minimal upkeep compared to some other materials.

#### Corrosion Resistance :

Aluminum naturally resists corrosion, making it a good choice for areas with high humidity or coastal environments.

# ALUMINIUM WINDOWS

## Modern Aesthetic :

Aluminum windows offer a sleek, modern look that can complement various architectural styles.

## Versatility :

Aluminium windows can be painted in a wide range of colors and finishes, allowing for customization to match specific design preferences.

## Thermal Efficiency :

While traditionally not as thermally efficient as some other materials, advancements in window technology and the use of thermal breaks have improved their energy performance.

## Benefits :

### Long-lasting :

Due to their durability and corrosion resistance, aluminium windows are known for their long lifespan.

### Weather Resistance :

They can withstand various weather conditions without warping, cracking, or rusting.

## Security :

Aluminium windows can be designed with robust locking mechanisms and can be combined with security glazing for enhanced protection.

## Sustainability :

Aluminium is a recyclable material, making it a more sustainable option compared to some other window materials.

## Types of Aluminium Windows :

### Traditional Aluminium Windows :

These are the standard aluminium windows with various frame profiles and glazing options.

### System Aluminium Windows :

These are more advanced, precision-engineered solutions with integrated mechanisms, improved insulation, and sleek finishes.

In summary, aluminium windows offer a combination of strength, durability, low maintenance, and modern aesthetics, making them a popular choice for various building applications.

# GLASS CLADDING



**TRANSPARENCY  
IS IMPORTANT  
AND IT SHOULD  
BE IN QUALITY.**

## GLASS CLADDING

Glass cladding refers to the practice of covering a building's exterior walls with glass panels to enhance its appearance and provide protection. It's a popular choice for both aesthetic and functional reasons, offering a sleek, modern look while also potentially improving thermal insulation, light transmission, and durability.

### What it is :

Glass cladding involves attaching glass panels to the exterior walls of a building. It's a form of external cladding that can be used on various building types, from commercial offices to residential homes.

### Why it's used :

#### Aesthetics :

Glass cladding provides a modern, visually appealing facade, often used to create a sleek, contemporary look.

# GLASS CLADDING

## Protection :

It can protect the building from external elements like wind, rain, and temperature fluctuations.

## Insulation :

Certain types of glass cladding, like those with thermal insulation properties, can help regulate temperature and improve energy efficiency.

## Light Transmission :

Glass allows natural light to enter the building, potentially reducing the need for artificial lighting and creating a brighter interior.

## Types of glass cladding :

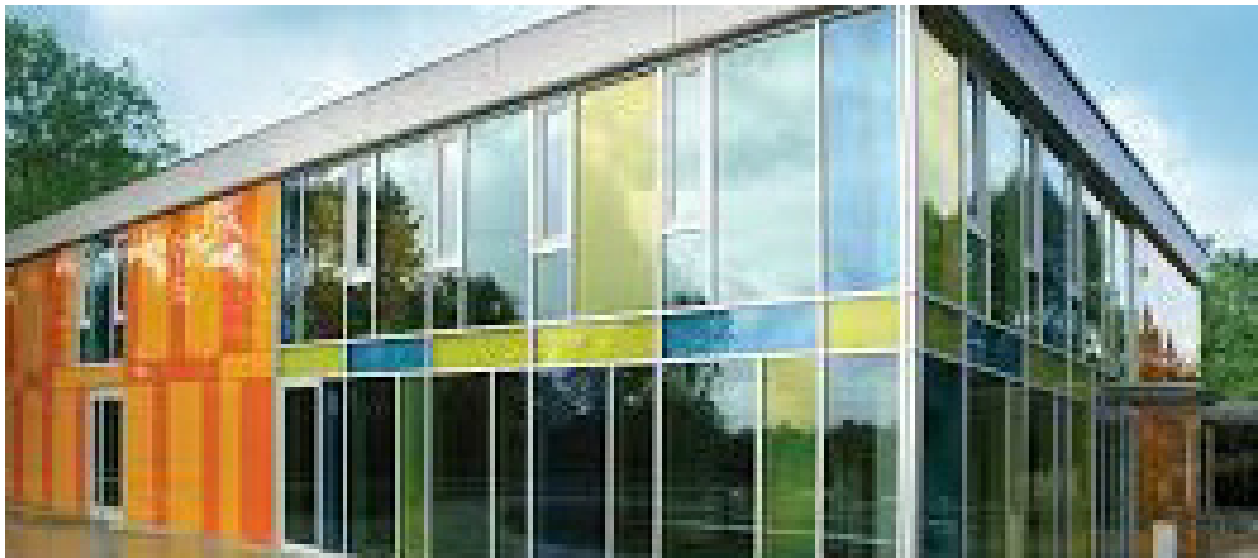
Curtain walling : A non-structural cladding system for the exterior of a building.

Rainscreen cladding : A type of cladding system that creates an air gap between the cladding and the wall, improving insulation and ventilation.

Other variations : Laminated glass, anti-stain and anti-scratch treatments, and decorative or colored glass options are also available.

## Benefits of glass cladding :

- Improved aesthetics : Creates a modern, sleek appearance.
- Increased light : Allows natural light to enter the building
- Enhanced protection : Shields the building from external elements.
- Potential for energy savings : Improves thermal insulation in some cases.
- Durability and low maintenance : Glass is relatively easy to clean and maintain.



# SOLAR



**SOLAR ENERGY  
IS GOOD FOR  
OUR PLANET.**

## SOLAR

Solar power, also known as solar electricity, is the conversion of energy from sunlight into electricity, either directly using photovoltaics (PV) or indirectly using concentrated solar power. Solar panels use the photovoltaic effect to convert light into an electric current.

Solar energy is the radiation from the Sun capable of producing heat, causing chemical reactions, or generating electricity. The total amount of solar energy received on Earth is vastly more than the world's current and anticipated energy requirements.

Our business associate for solar has years of expertise and maintains exceptionally high standards of quality, safety, and environmental protection and is committed to delivering projects within budget and on schedule.

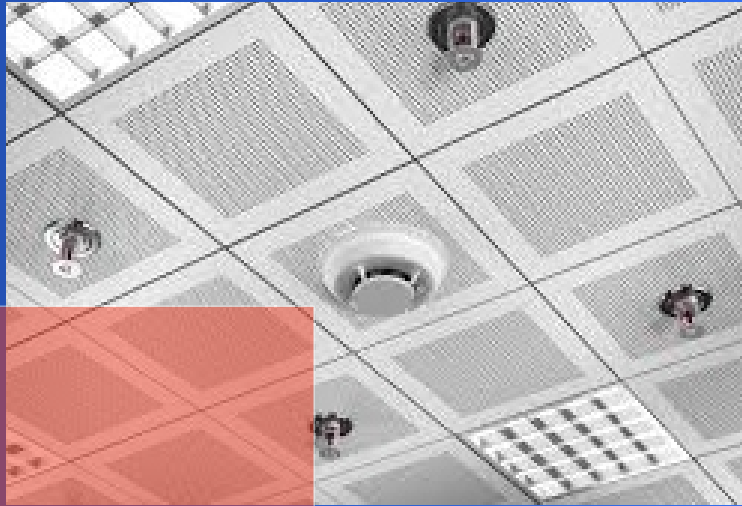
Our solar business associate is formed by a team of qualified professionals with the motto of serving the sector by providing end-to-end solutions.

Our solar business associates specialisation ranges from core services to operations and maintenance services. Our solar business associates strength stems from its knowledge-based approach, highly experienced team, and strong multi-disciplinary capabilities. Our solar business associate fosters a culture of excellence and challenges environmental practices. They design and deliver solutions for customers by leveraging its domain and business expertise.

## SOLAR EPC

- We Provide End To End Solutions for MW Plant Construction Works.
- We provide End to End Solutions for KW requirements.
- We also provide Solar Products as well.
- We perform a site survey to check the viability of a solar system.
- We design and install the solar system.
- We maintain production of the solar system through equipment monitoring and maintenance.
- We supply and Install Foundation for mounting structures.
- We supply and Install mounting structures.
- We supply and Install Inverters, Junction Boxes and DC cables.
- We do Earthling, Streetlights and plant lighting as well.
- We also design, supply and install roof top KW solar plants.

## SPRINKLER SYSTEM



Fire sprinkler system is an active fire protection method, consisting of a water supply system, providing adequate pressure and flowrate to a water distribution piping system, onto which fire sprinklers are connected.



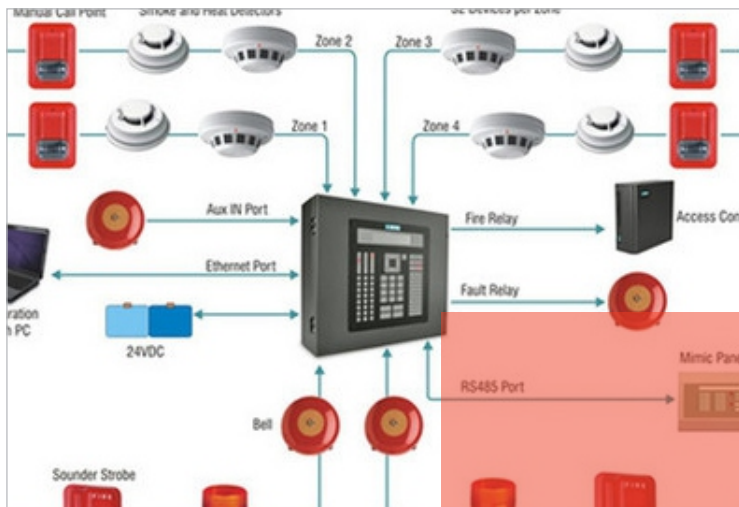
## FIRE HYDRANT SYSTEM

Fire hydrant installation consists of a system of pipe work connected directly to the main water supply to provide water to each and every hydrant outlet and is intended to provide water for the firemen to fight a fire.

## FIRE PUMP ROOM



A fire pump works through the use of an engine, which can be powered by electricity, diesel, or sometimes by steam turbines. The pump is activated when one or more of the sprinklers in the system is triggered, causing the pressure in the system to drop below a specific level.



## FIRE ALARM AND SMOKE DETECT SYSTEM

A fire alarm system has a number of devices working together to detect and warn people through visual and audio appliances when smoke, fire, carbon monoxide or other emergencies are present.

# ON GOING FIRE FIGHTING PROJECTS

SENROOFS  
(Nahur)

FIRE FIGHTING



EARTH  
ENCLAVE  
(Girgaon)

FIRE FIGHTING  
& PLUMBING

LIFESCAPES  
SHUBHAM  
(Girgaon)

FIRE FIGHTING  
& PLUMBING



[www.nmconstructionsrevices.com](http://www.nmconstructionsrevices.com)

# ON GOING FIRE FIGHTING PROJECTS

RUSTOMJEE  
TREC BELLA  
(Bhandup)

FIRE FIGHTING



SIDDHA  
SKY  
(Wadala)

FIRE FIGHTING

KRISHVI ESCAPE  
(Fanaswadi)

FIRE FIGHTING

[www.nmconstructionsrevices.com](http://www.nmconstructionsrevices.com)



# ON GOING FIRE FIGHTING PROJECTS

SHETH ZURI  
(Thane)



FIRE FIGHTING



AJMERA  
DOWNTOWN  
(Marine Lines)

FIRE FIGHTING

TREC AANGAN  
(Mahim)



FIRE FIGHTING

[www.nmconstructionsrevices.com](http://www.nmconstructionsrevices.com)

# ON GOING FIRE FIGHTING PROJECTS

PLATINIUM  
RESIDENCY  
(Jogeshwari)

FIRE FIGHTING



RUBBERWALA  
FUEGO  
(Grant Road)

FIRE FIGHTING

RIVER WOOD  
PARK (Dombivali)

FIRE FIGHTING



# ON GOING FIRE FIGHTING PROJECTS



LIFE SPACES  
ARIHANT  
(Girgaon)

FIRE FIGHTING



SUMER LIFE  
(Andheri)

FIRE FIGHTING

# FIRE FIGHTING PROJECTS



**ALERT TODAY  
ALIVE TOMORROW  
FIRE SAFETY WINS.**

# COMPLETED SITE FIRE FIGHTING PROJECTS

IKEA  
UTOPIA  
DEVELOPERS  
(Kamla Mills)  
FIRE FIGHTING



BAFNA  
AVENUE  
(Khetwadi)

FIRE FIGHTING

DHARTI  
(Parel)



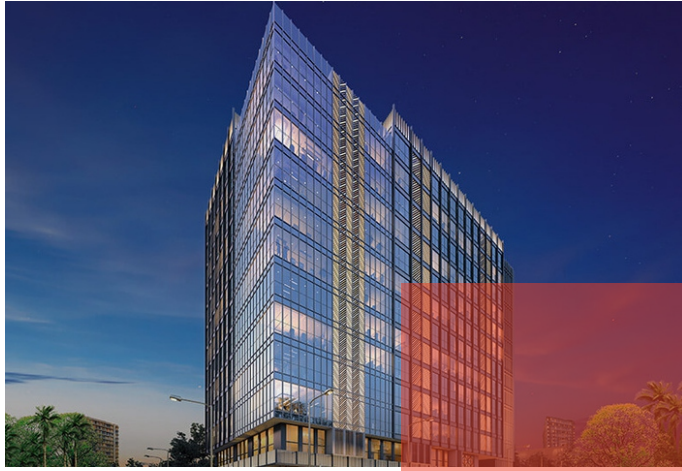
FIRE FIGHTING

[www.nmconstructionsrevices.com](http://www.nmconstructionsrevices.com)

# COMPLETED SITE FIRE FIGHTING PROJECTS

LIFESPACES AQUINO  
(Prabhadevi)

FIRE FIGHTING



AT MAHAL  
(Andheri)

FIRE FIGHTING

93 EAST  
(Andheri)

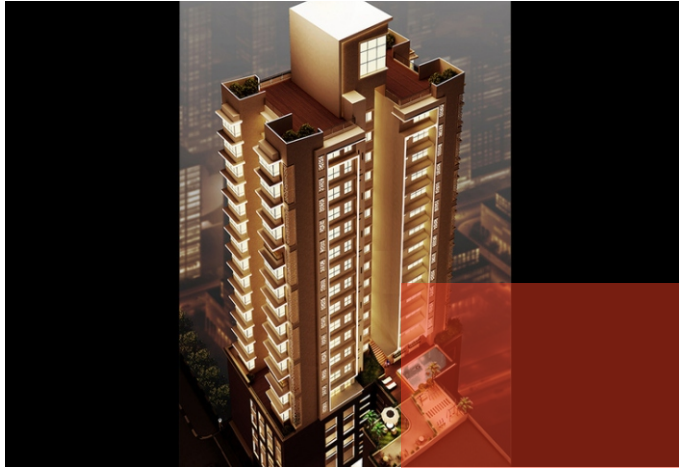
FIRE FIGHTING



# COMPLETED SITE FIRE FIGHTING PROJECTS

JEWEL CREST  
(Mahim)

FIRE FIGHTING



NAMAN  
RESIDENCY  
(Byculla)

FIRE FIGHTING

NEELAM  
SOLSTICE  
(Ghatkopar)

FIRE FIGHTING



[www.nmconstructionsrevices.com](http://www.nmconstructionsrevices.com)

# COMPLETED SITE FIRE FIGHTING PROJECTS

ADITYA HEIGHTS  
(Mumbai Central)



FIRE FIGHTING



SANGHVI WOODS  
(Dahisar)

FIRE FIGHTING

KRISHVI HEIGHTS  
(Girgaon)



FIRE FIGHTING

[www.nmconstructionsreivices.com](http://www.nmconstructionsreivices.com)

# COMPLETED SITE FIRE FIGHTING PROJECTS

COSMOS AURA  
(Worli)

FIRE FIGHTING



RUBBERWALA  
NEBULA  
(Grant Road)

FIRE FIGHTING

EARTH VINTAGE  
(Dadar)

FIRE FIGHTING



# COMPLETED SITE FIRE FIGHTING PROJECTS

36 BABULNATH  
(Babulnath)

FIRE FIGHTING



GREEN STONE  
HERITAGE  
(Crawford Market)

FIRE FIGHTING

JOHAN SIGNATURE  
(Wadala)

FIRE FIGHTING

[www.nmconstructionsrevices.com](http://www.nmconstructionsrevices.com)



# COMPLETED SITE FIRE FIGHTING PROJECTS

ITI COLLEGE ( PWD )  
Government Project  
( Mumbai )



FIRE FIGHTING



D MART  
(Ghatkopar)

FIRE FIGHTING

## OTHER COMPLETED SITES

SANGHVI (MATUNGA)

SRCC HOSPITAL

AURUM HEIGHTS

SHRI PARRSSVA ELEGANZA(GHATKOPAR)

SANGHVI ESTELLA

SAIKRISHNA HOSPITAL (MEHSANA)

B VARDHAN HEIGHTS

ARHAMBLUZ (ANDHERI)

SANGHVI HEIGHTS (WADALA)

JNPT GUEST HOUSE

EKLAVYA HIGH SCHOOL(SURAT)

MINT MEGHNA (ELPHINSTONE)

AURUM HEIGHTS

AADITYA ENCLAVE

AADITYA PRIDE

DEVPARADISE

LIFESCAPES PRITHVII

OM SHANTI PLATINA

GRS HEIGHTS

SURANA HOSPITAL(MALAD)

AJMERA MIDTOWN

SMAASH (KAMALAMILLS)

**AND 75 MORE SITES COMPLETED ACROSS INDIA**

[www.nmconstructionsrevices.com](http://www.nmconstructionsrevices.com)

# ANNUAL MAINTENANCE



**RUNWAL FOREST**  
(Bhandup)



**IKEA**  
(Kamala Mills)



**MANTRALAY**  
(Churchgate)



**SURANA HOSPITAL**  
(Malad)



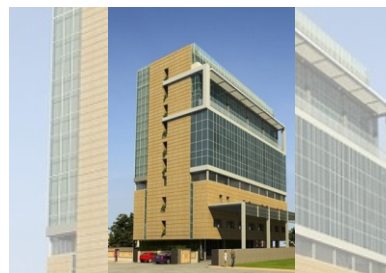
**BHATIA HOSPITAL**  
(Tardeo)



**SRCC HOSPITAL**  
(Haji Ali)



**ORCHID ENCLAVE**  
(Mumbai Central)



**MAHATMA PHULE  
HOSPITAL**  
(Sanpada)



**GRAND PARADI**  
(Kemps Corner)

# ANNUAL MAINTENANCE



**DARSHAN PRIDE**  
(Bhandup)



**TRANSCON TRIUMPH**  
(Andheri)



**LOTUS TOWER**  
(Thane)



**NAHAR INTERNATIONAL SCHOOL**  
(Andheri)



**STAR MILL**  
(Dadar)



**JOY HOSPITAL**  
(Chembur)



**NAHAR CAYENNE**  
(Chandevali)



**AJ HOUSE**  
(Andheri)



**NAHAR 8 TOWER**  
(Powai)

OUR VALUABLE CLIENTS FIRE FIGHTING PROJECTS

VALUABLE CLIENTS FIRE FIGHTING PROJECTS



“A satisfied customer is one who will continue to buy from you, seldom shop around, refer other customers, and in general be a superstar advocate for your business.”

VALUABLE CONSULTANTS FIRE FIGHTING PROJECTS



sn joshi consultants pvt ltd



MEP CONSULTING ENGINEERS



**Dnyanesh G. Bhave**  
Consultant Plumbing & Fire Fighting  
HVAC, Electrical & LV



ANIL VERMA  
& ASSOCIATES



**Radiant**  
Consulting Engineers



Prashanti MEP Consultant



AMBROSIA DESIGNS  
PRIVATE LIMITED



MAK MEP  
CONSULTANTS



JW



URJA BUILDING SERVICES CONSULTANTS



Electro-Mech Consultants Pvt.Ltd.



Pankaj Dharkar & Associates  
MEP Consultants



VIKAS JOSHI & ASSOCIATES



GRÜNE DESIGNS

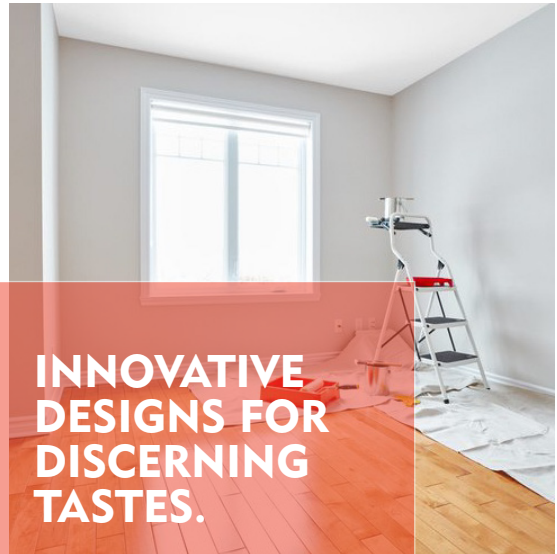


WISETECH  
MEP CONSULTANTS PVT. LTD.

WE GIVE THE  
PERFECT VALUE  
TO OUR VALUABLE  
CLIENTS AND OUR  
VALUABLE CONSULTANTS.

# INTERIOR BUILDING PAINTING

Interior painting refers to the process of applying paint to the inside surfaces of a building, such as walls, ceilings, and trim, primarily for aesthetic and protective purposes. It's a crucial aspect of interior design, allowing homeowners to personalize their spaces while also enhancing their functionality and overall atmosphere.



**INNOVATIVE  
DESIGNS FOR  
DISCERNING  
TASTES.**

## Purpose :

- **Aesthetics :**  
Interior painting revitalizes a building's appearance, improving its curb appeal and overall visual appeal. Interior painting allows for a wide range of color choices, enabling homeowners to express their individual style and create a desired mood or ambiance within their living spaces.
- **Protection :**  
Paint acts as a barrier against moisture, mildew, and mold, helping to preserve the integrity of the interior surfaces.
- **Maintenance :**  
It can help to cover up imperfections like cracks, dents, and stains, and can make it easier to clean walls and surfaces.
- **Value :**  
Regular interior painting can help to maintain or even increase the overall value of a property.

## Key aspects of interior painting :

- **Surface Preparation :**  
This includes cleaning, sanding, and priming the surfaces to ensure proper adhesion and a smooth finish.
- **Paint Selection :**  
Choosing the right type of paint (e.g., matte, satin, gloss) and considering factors like durability, washability, and VOC levels is important.
- **Application :**  
Multiple coats are often applied to achieve even coverage and a lasting finish.

In essence, interior painting is a versatile and impactful way to refresh and protect the interior of a building, contributing to both its visual appeal and structural longevity.

# EXTERIOR BUILDING PAINTING

Exterior building painting refers to the process of applying paint or protective coatings to the outer surfaces of a building, including walls, trims, doors, and other architectural elements. It serves both aesthetic and protective purposes, enhancing the building's appearance and safeguarding it from weather damage, UV rays, and other environmental factors.



## Key aspects of exterior building painting :

- **Aesthetic Enhancement :**  
Exterior painting revitalizes a building's appearance, improving its curb appeal and overall visual appeal.
- **Protection :**  
It acts as a barrier against the elements, preventing water damage, wood rot, and fading due to sunlight.
- **Increased Property Value :**  
A well-maintained exterior with a fresh coat of paint can significantly increase the property's value.
- **Early Problem Detection :**  
Exterior painting can reveal hidden damage, such as cracks, water stains, or pest infestations, allowing for timely repairs.
- **Material Lifespan :**  
By protecting the building's exterior surfaces, painting can extend the lifespan of materials like siding and trim.
- **Weather Resistance :**  
Exterior paints are formulated to withstand harsh weather conditions, including rain, wind, and extreme temperatures.
- **UV Protection :**  
They also offer protection against harmful UV rays, preventing fading and degradation of the building's surfaces.
- **Proper Preparation :**  
Before painting, it's crucial to properly prepare the surfaces by cleaning, repairing damage, and applying primer.
- **Choosing the Right Paint :**  
Selecting the appropriate type of exterior paint is essential, considering factors like the material of the building and the local climate.
- **Professional Assistance :**  
Engaging professional painters can ensure a high-quality, long-lasting paint job.

# DEMOLITION



## DEMOLITION

Demolition is the dismantling, razing, destroying or wrecking of any building or structure or any part thereof. Demolition work involves many of the hazards associated with construction.

# THANKING YOU



FOR ANY FURTHER  
INFORMATION REGARDING

- CEMENT
- RMC
- TILES
- ALUMINIUM WINDOWS
- GLASS CLADING
- SOLAR
- FIRE
- PAINTING
- DEMOLITION

PLEASE FEEL FREE TO  
CONTACT US ANYTIME.



✉ [info@nmconstructionservices.com](mailto:info@nmconstructionservices.com)

🌐 [www.nmconstructionsrevices.com](http://www.nmconstructionsrevices.com)



KNOWLEGDE



INTEGRITY



EXPERIENCE



ETHICS



EXCELLENCE